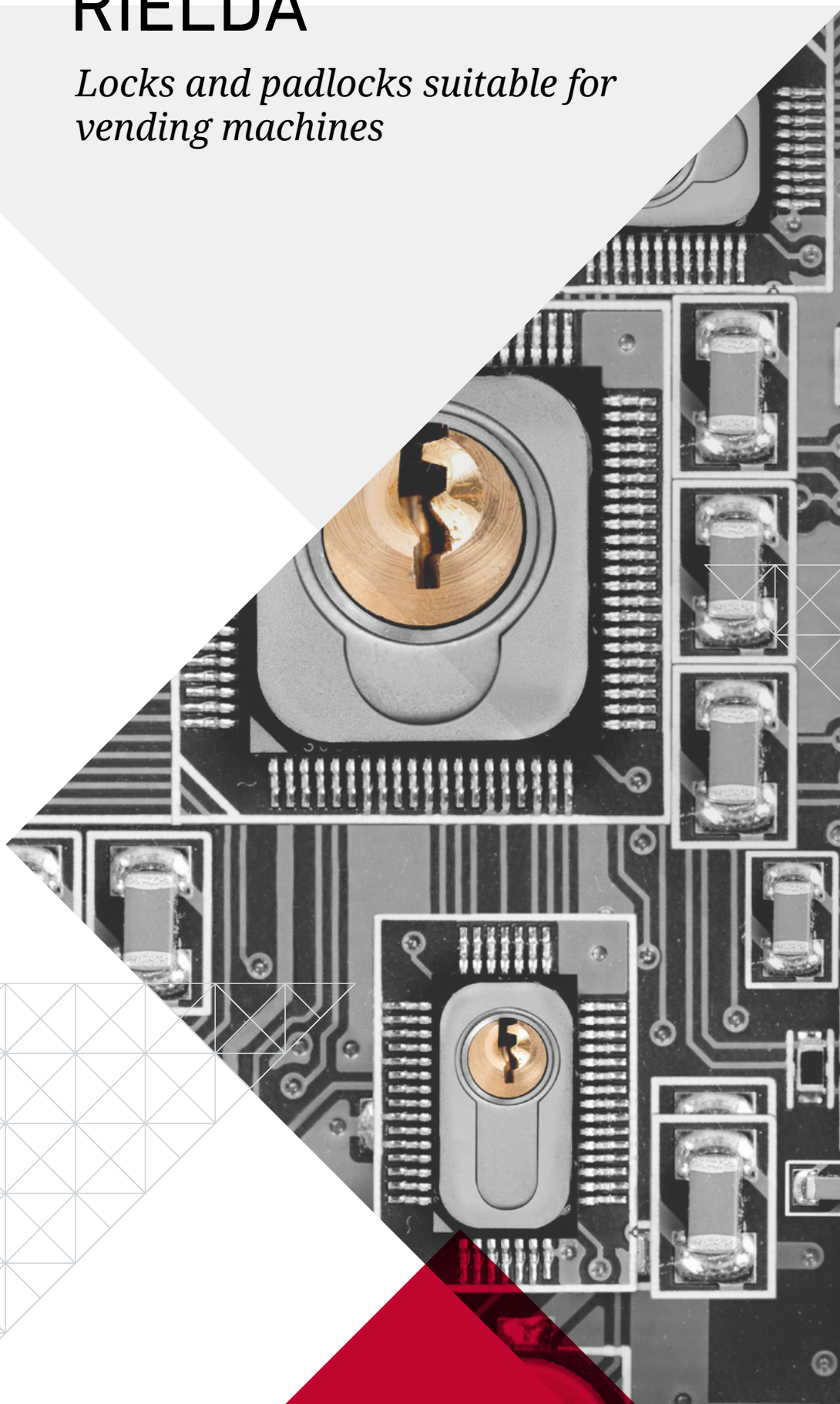


RIELDA

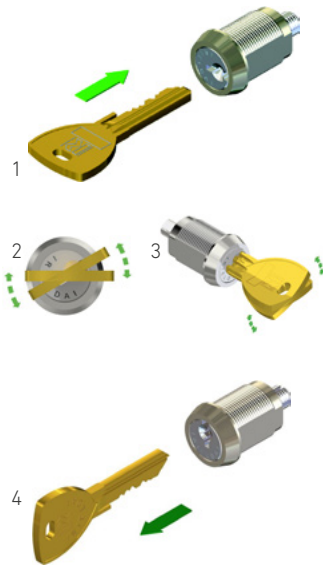
*Locks and padlocks suitable for
vending machines*



INSTRUCTIONS

Before installing the lock and tighten the nuts make sure the lock has already been programmed. The lock is certainly programmed if the silver user key can be inserted and removed.

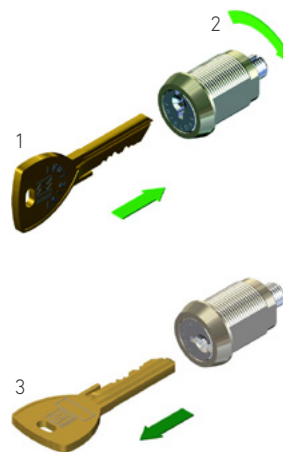
PROGRAMMING



1. Insert the gold programming key
2. Turn the gold key back and forth a few times without completing the rotation (about 30°)
3. Rotate the key to the vertical position
4. Remove the key

The lock is now programmed. Put away the gold programming key in a safe place and use the silver key..

RE-PROGRAMMING



1. Insert the gold programming key
2. Rotate the key (from the vertical position to the horizontal position)
3. Remove the key

The lock is now ready to be programmed with a new key.

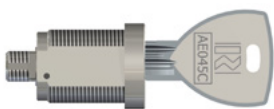
MECHANISMS

The locking mechanisms inside the back body of the lock should move freely without exerting any stress on the lock.

LUBRIFICATION

In order to maintain a correct working usage, locks should be lubricated at least every six months with a penetrating lubricant spray. Avoid heavy oils which tend to withhold the accumulation of dust and dirt.

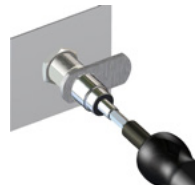
INSTRUCTIONS FOR TIGHTENING NUT WITH TORQUE WRENCH ON CAM LOCKS SERIES 400-500



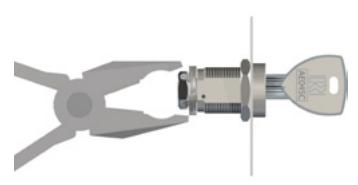
Install with user key inserted



Insert the cam, external tab lock washer and nut



Tighten the nut with the appropriate torque wrench (1N)

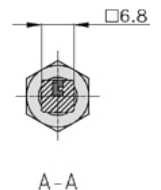
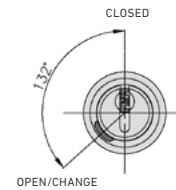
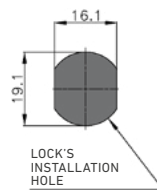


Tighten the external tabs of the lock washer

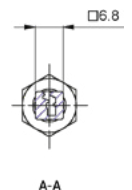
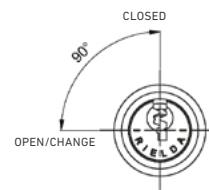
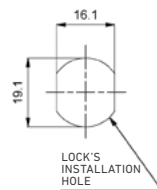
WARNING:

It is very important to tighten the nut with the appropriate torque wrench (1N). Tightening of the nut with pliers, spanners, monkey wrenches or any other kind of tool, can lead to an immediate seizure of the lock, or it could seize after a period of use.

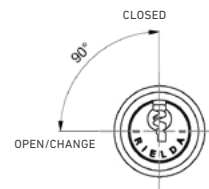
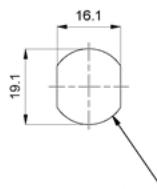
- mechanical re-programmable lock
- made in brass
- external finish in nickel
- resistant to opening with method "bumping"
- resistant to opening with picks - "picking"
- resistant to drilling



BIANCHI 41029626



BIANCHI 41029626

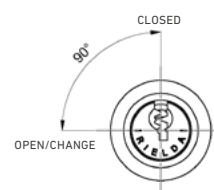
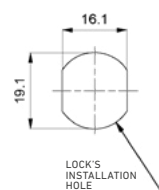
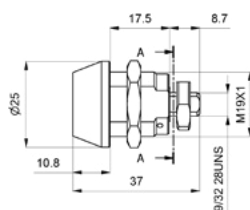


LOCKS AND PADLOCKS ARE SOLD **UNCODED** AND **WITHOUT KEYS**

SERIES 400-500



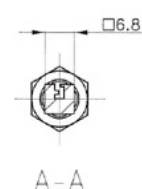
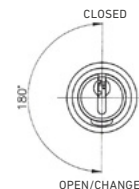
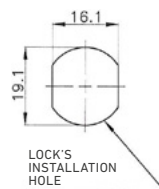
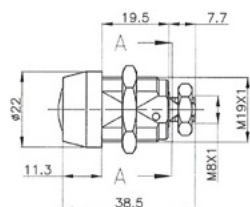
ATEL Code: 21VE018



MODEL 426 RS1



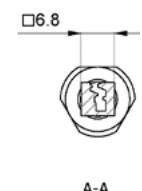
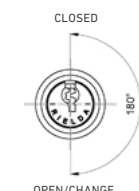
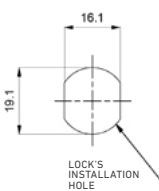
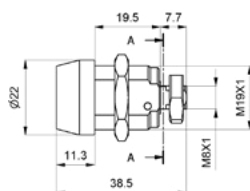
ATEL Code: 22DU001



MODEL 430



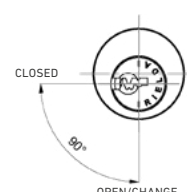
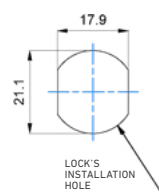
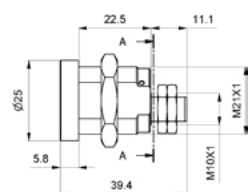
ATEL Code: 22DU002



MODEL 430 RS1



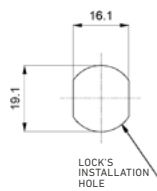
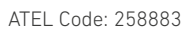
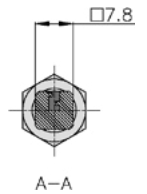
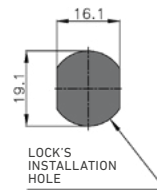
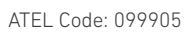
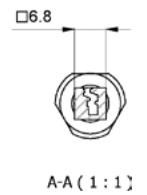
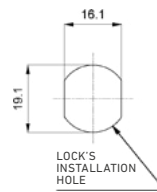
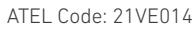
ATEL Code: 3160064026



MODEL 463D RS1

SIELAFF 316.00.640.26

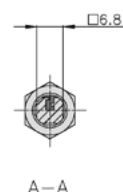
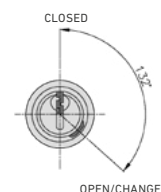
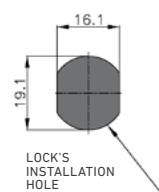
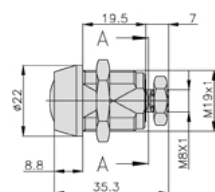
Downloaded from <http://ajphaphysocpharm.sagepub.com/> at 11:51 11 November 2014



SERIES 400-500



ATEL Code: 21VE009

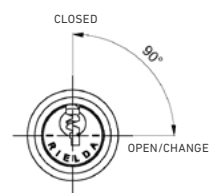
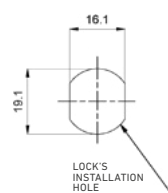
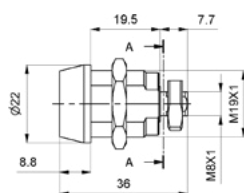


MODEL 510

BIANCHI 43018026



ATEL Code: 0SER0000023

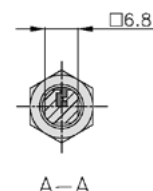
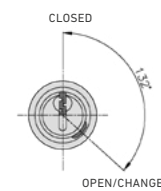
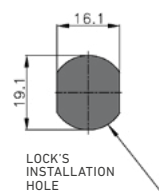
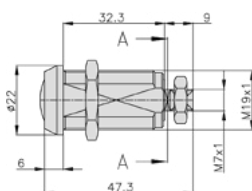


MODEL 510 RS1

RHEAVENDORS SER0000023



ATEL Code: 41029616

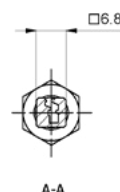
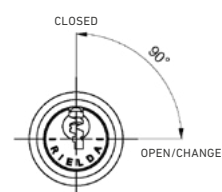
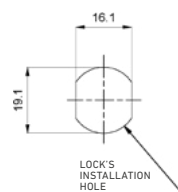
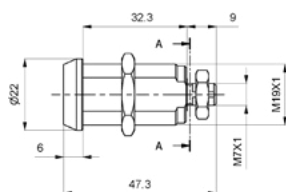


MODEL 511

BIANCHI 41029616, FAS 210249



ATEL Code: 21VE011



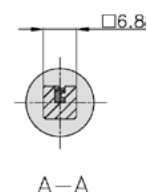
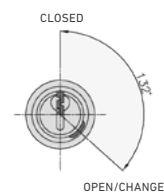
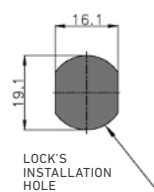
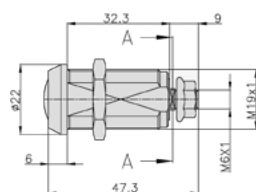
MODEL 511 RS1

FAS 210363

SERIES 400-500



ATEL Code: 0NV02229

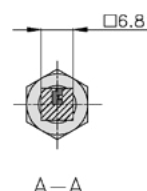
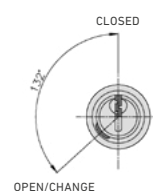
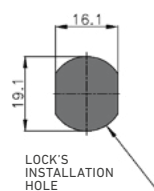
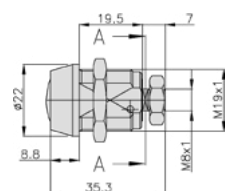


MODEL 512

SAECO NV02.229, 12002251



ATEL Code: 210240

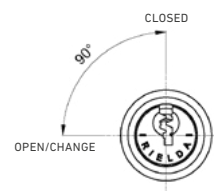
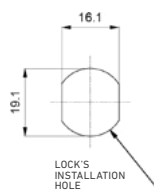
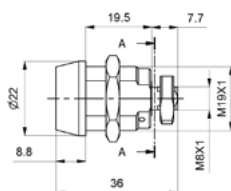


MODEL 515

FAS 210240



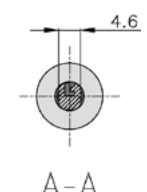
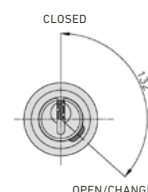
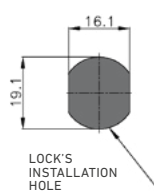
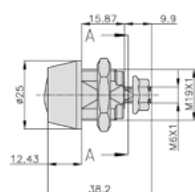
ATEL Code: 21VE024



MODEL 515 RS1



ATEL Code: 0U0000125511



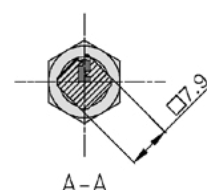
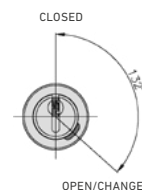
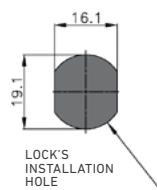
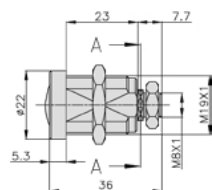
MODEL 524

BIANCHI 43000156 , UNICUM U0000125511

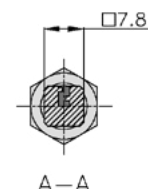
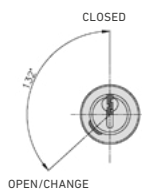
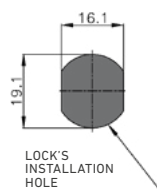
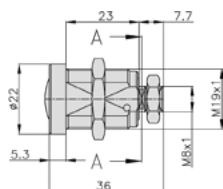
SERIES 400-500



ATEL Code: 21VE010

**MODEL 525**

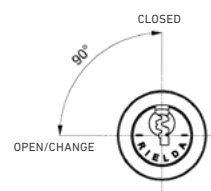
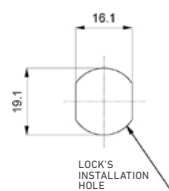
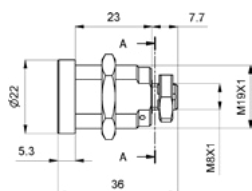
ATEL Code: 0V1156

**MODEL 536**

NECTA 0V1156



ATEL Code: 258884

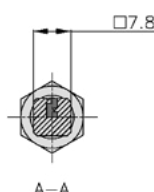
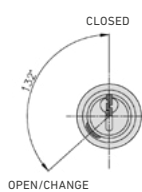
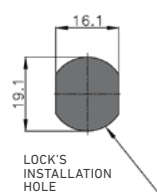
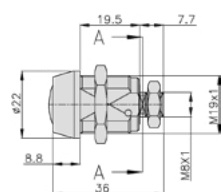


MODEL 536 RS1

NECTA 258884



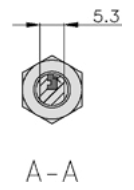
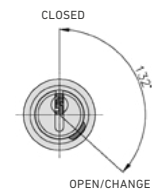
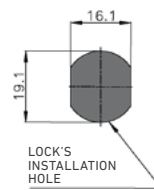
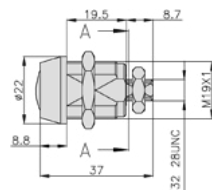
ATEL Code: 21058936



MODEL 538

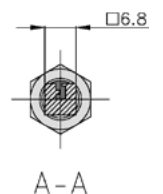
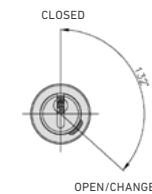
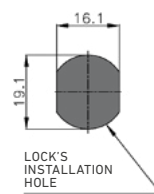
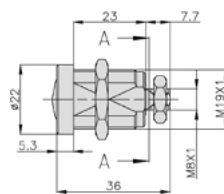
BIANCHI 21058936

SERIES 400-500



ATEL Code: 0U0000136118

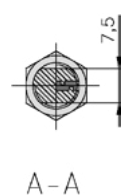
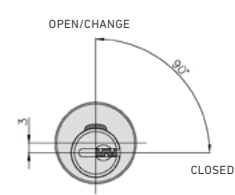
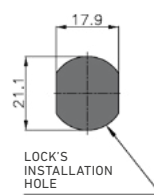
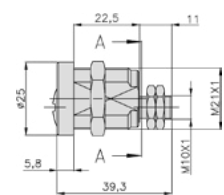
MODEL 549



ATEL Code: 11003480

MODEL 557

SAECO 11003480



ATEL Code: 21VE031

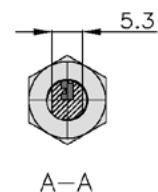
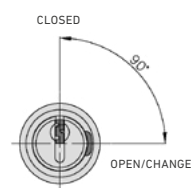
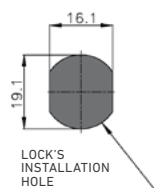
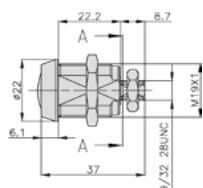
MODEL 561D

BIANCHI 43000456

SERIES 400-500



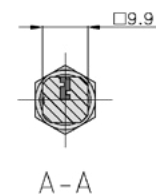
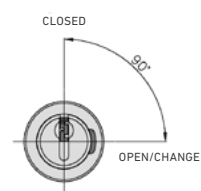
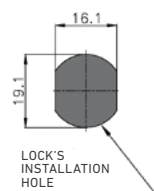
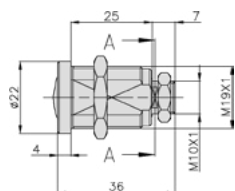
ATEL Code: 21VE025



MODEL 567



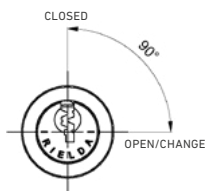
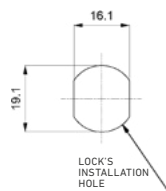
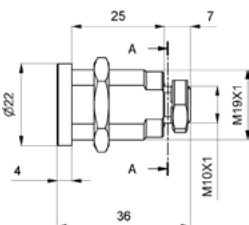
ATEL Code: 21VE026



MODEL 580



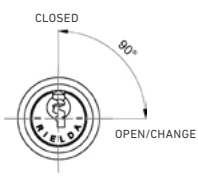
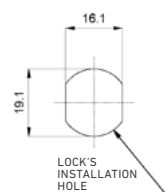
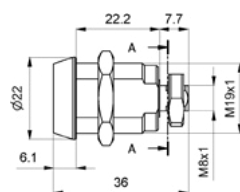
ATEL Code: 21VE016



MODEL 580 RS1



ATEL Code: 21VE013



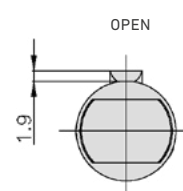
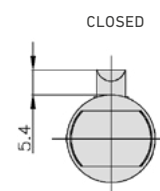
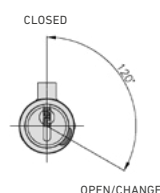
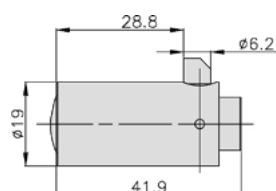
MODEL 583 RS1

T-HANDLE LOCKS SERIES 4000

- mechanical re-programmable security cylinder
- made in brass
- external finish in nickel
- spring closure latch
- closure latch in brass
- resistant to opening with method "bumping"
- resistant to opening with picks - "picking"
- resistant to drilling



ATEL Code: 987352

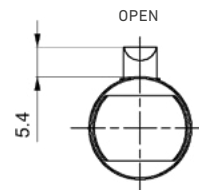
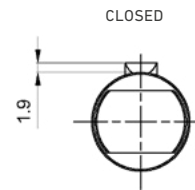
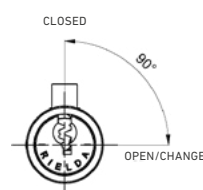
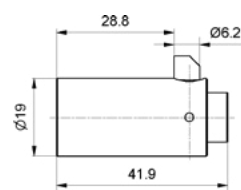


MODEL 4000

BIANCHI 21015516, NECTA 987352



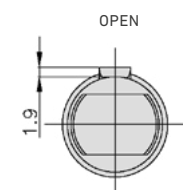
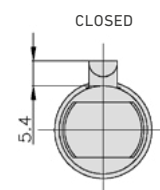
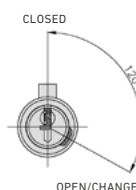
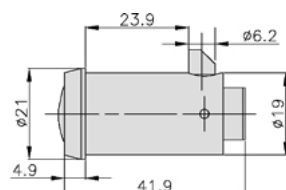
ATEL Code: 21VE012



MODEL 4000 RS1



ATEL Code: 21VE028



MODEL 4012

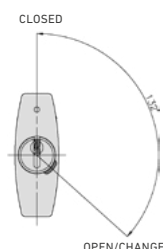
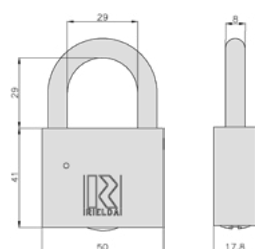
SHACKEL PADLOCKS

SHACKEL PADLOCKS

- mechanical re-programmable padlock
- external finish in nickel
- resistant to drilling
- resistant to opening with method "bumping"
- resistant to opening with picks - "picking"



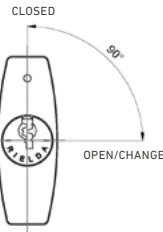
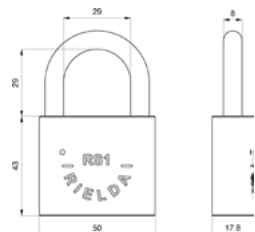
ATEL Code: 21VE036



MODEL 900-50/29



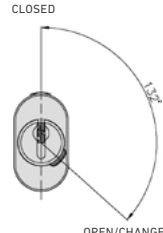
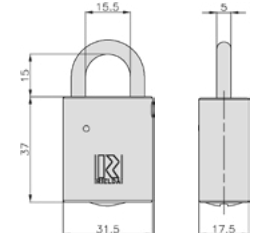
ATEL Code: 21VE015



MODEL 900-50/29 RS1



ATEL Code: 21VE007



MODEL 900-31.5/15

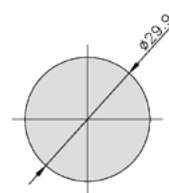
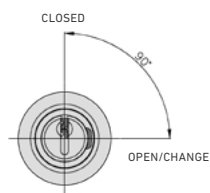
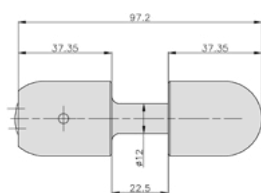
ARMoured PADLOCKS SERIES 800

ARMoured PADLOCKS SERIES 800

- mechanical re-programmable padlock
- made in tempered steel
- external finish in nickel
- resistant to opening with method "bumping"
- resistant to opening with picks - "picking"
- resistant to drilling



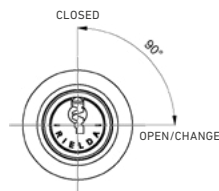
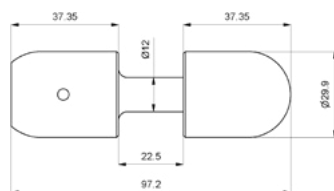
ATEL Code: 21VE029



MODEL 800-30 HS



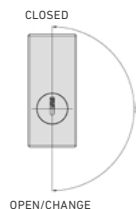
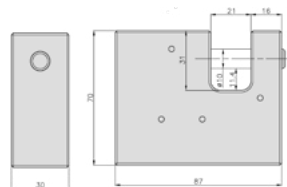
ATEL Code: 21VE019



MODEL 800-30 RS1



ATEL Code: 21VE037

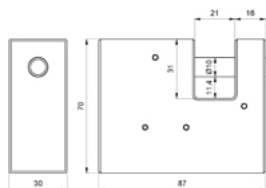


MODEL 801-87 HS

ARMOURED PADLOCKS SERIES 800



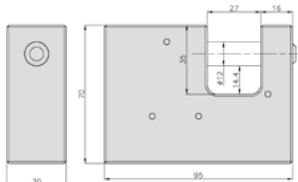
ATEL Code: 21VE038



MODEL 801-87 RS1



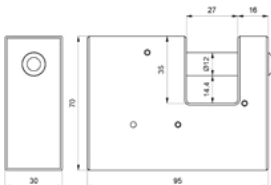
ATEL Code: 21VE027



MODEL 801-95 HS



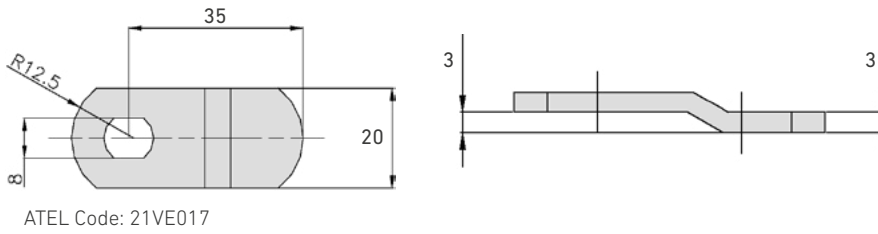
ATEL Code: 49BQ136



MODEL 801-95 RS1

8 MM DOUBLE-SIDED LEVERS

8 MM DOUBLE-SIDED LEVERS



MODEL 306



GEV Großküchen-Ersatzteil-Vertrieb GmbH

Gadastr. 4
85232 Bergkirchen - Germany
T +49 8142 6522-50
info.ger@repagroup.com
www.gev-online.com

LF S.p.A. a socio unico

Via Voltri 80
47522 Cesena FC - Italy
T +39 0547 341111
info.it@repagroup.com
www.lfspareparts724.com

EPGC S.a.s.

13 Rue des Forts
59960 Neuville en Ferrain - France
T +33 3 20250621
france@repagroup.com
www.epgc.com

Commercial Catering Spares Ltd.

Block C - Axis Point Hill Top Road
Heywood - Lancashire - OL10 2RQ - UK
T +44 1706 621 155
info@ccspares.co.uk
www.ccspares.co.uk

Atel S.r.l. a socio unico

Via Selvuzzis 51/2
33100 Udine UD - Italy
T +39 0432 602095
info@atelitalia.com
www.atelitalia.com