

# BIANCHI SNACK & FOOD

*Components and spare parts  
for impulse dispenser  
vending machines*





# TABLE OF CONTENTS

DOOR, INTERNAL SIDE	4
BUTTONS	4
ELECTRIC AND ELECTRONIC COMPONENTS	4
DOOR, EXTERNAL SIDE	5
BODY COMPONENTS	5
ELECTRIC AND ELECTRONIC COMPONENTS	5
LOCKS, KEYS, LATCHES	6
PUSH-BUTTON PANELS	6
WITHDRAWAL COMPARTMENT	7
WITHDRAWAL COMPARTMENT AND COMPONENTS	7
COIN INTRODUCTION AND RECOVERY	8
COIN INTRODUCTION	8
COIN RECOVERY	8
CABINET	9
BODY COMPONENTS	9
COIN BOXES	9
ELECTRIC AND ELECTRONIC COMPONENTS	9
MICROSWITCHES	9
ELECTRIC PANEL	10
ELECTRIC AND ELECTRONIC COMPONENTS	10
THERMOFUSES	10
TOOLS	10
PRODUCT DRAWERS E SPIRALS	11
ELECTRIC AND ELECTRONIC COMPONENTS	11
GEAR MOTORS	11
PRODUCT DRAWERS AND COMPONENTS	12
SCREWS	12
SPIRALS	13
COOLING UNIT	14
COMPRESSORS	14
COOLING UNITS	14
EVAPORATORS	15
FANS	15
PROBES	15
SCREWS	15
VARIOUS	16

# DOOR, INTERNAL SIDE BUTTONS ELECTRIC AND ELECTRONIC COMPONENTS



ATEL Code: 26019482  
OEM Code: 26019482

## SERVICE BUTTON

ø 22 mm

ARIA+, ARIA L, ARIA M, BVM 685, BVM 695, VISTA+



ATEL Code: 26019492  
OEM Code: 26019492

## CHANGE-GIVER BUTTON

BVM 671, BVM 681



ATEL Code: 22125052  
OEM Code: 22125052

## MASTER/SLAVE CABLE 3000mm

BVM 671, BVM 676, BVM 681, BVM 685, BVM 695, VEGA



ATEL Code: 22172312  
OEM Code: 22172312

## WIRING + EXECUTIVE POWER SUPPLY

ARIA L, ARIA M, BVM 671, BVM 681, BVM 685, BVM 695, VISTA+



ATEL Code: 2208422201  
OEM Code: 22084222-01

## EXECUTIVE INTERFACE CABLE 24V 500 mm

ARIA+, ARIA L, ARIA M, BVM 551, BVM 581, BVM 587, BVM 671, BVM 681, BVM 685, BVM 695, VEGA, VISTA+



ATEL Code: 2602733604  
OEM Code: 26027336-04

## RED SMT WITH MICROSWITCH 256K CPU BOARD

142x116 mm

ARIA+, ARIA L, ARIA M, BVM 671, BVM 681, BVM 685, BVM 695



ATEL Code: 2602751601  
OEM Code: 26027516-01

## POWER ELECTRONIC BOARD

212x63 mm

BVM 636, BVM 671, BVM 676, BVM 681, BVM 685, VEGA



ATEL Code: 26027526  
OEM Code: 26027526

## SMT TROLL ELECTRONIC BOARD

ARIA L, ARIA M, ARIA S, BVM 636, BVM 671, BVM 676, BVM 681, BVM 685, BVM 695

# DOOR, EXTERNAL SIDE BODY COMPONENTS ELECTRIC AND ELECTRONIC COMPONENTS



ATEL Code: 05232625M00  
OEM Code: 05232625M00

## TRANSPARENT INFO PANEL 230x120 mm

ARIA M, BVM 671, BVM 681



ATEL Code: 05233715M00  
OEM Code: 05233715M00

## TRANSPARENT INFO UPPER PANEL 121x65 mm

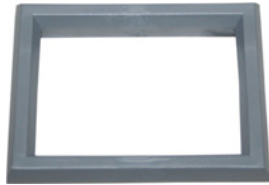
BVM 671, BVM 681, BVM 685, BVM 695



ATEL Code: 30263811  
OEM Code: 30263811

## BLACK UPPER PANEL SHOWCASE

BVM 671, BVM 681, BVM 685, BVM 695



ATEL Code: 05139215  
OEM Code: 05139215

## SILVER COIN RECOVERY FRAME

VEGA



ATEL Code: 0508311501M30  
OEM Code: 05083115-01M30

## COIN RECOVERY COMPARTMENT DOOR

ARIA+, ARIA L, ARIA M, BVM 671, BVM 681, VEGA 600, VISTA+



ATEL Code: 0508317501  
OEM Code: 05083175-01

## SILVER COIN RECOVERY COMPARTMENT DOOR

VEGA 700, VEGA 850



ATEL Code: 2604791602  
OEM Code: 26047916-02

## DISPLAY 16x2 CABLE 650mm

122x44 mm

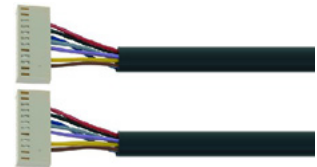
BVM 671, BVM 681, BVM 685



ATEL Code: 05232515M00  
OEM Code: 05232515M00

## DISPLAY PROTECTION

ARIA L, ARIA M, BVM 671, BVM 681, BVM 685, BVM 695, VISTA+



ATEL Code: 22170812  
OEM Code: 22170812

## NUMERIC KEYBOARD CABLE 7 WIRE 700 mm

ARIA L, ARIA M, BVM 671, BVM 681, BVM 685, BVM 695, VEGA, VISTA+

# DOOR, EXTERNAL SIDE LOCKS, KEYS, LATCHES PUSH-BUTTON PANELS



ATEL Code: 43001726  
OEM Code: 43001726

## LOCK RELEASE KEY

BVM 551, BVM 581, BVM 587, BVM 636,  
BVM 671, BVM 676, BVM 681, BVM  
685, IMOLA, INDIANAPOLIS, MONZA,  
SILVERSTONE, VEGA



ATEL Code: 41029836  
OEM Code: 41029836

## LOCK KEY

ARIA L, ARIA L, ARIA M, ARIA S, ARIA+,  
BVM 551, BVM 581, BVM 587, BVM  
636, BVM 671, BVM 672, BVM 676,  
BVM 681, BVM 685, BVM 695, IMOLA,  
INDIANAPOLIS, MONZA, SILVERSTONE,  
VEGA, VISTA+



ATEL Code: 41009216  
OEM Code: 41009216

## PASS FOR LOCK

VEGA



ATEL Code: 21015146  
OEM Code: 21015146

## LOCK WITH REMOVABLE CYLINDER

VEGA



ATEL Code: 21058936  
OEM Code: 21058936



ATEL Code: 01979311  
OEM Code: 01979311

## LOCK SHOE

BVM 636



ATEL Code: 43130310  
OEM Code: 43130310

## „T“ HANDLE WITH BLOCK

BVM 671, BVM 676, BVM 681, BVM 685,  
BVM 695, VEGA



ATEL Code: 21024416  
OEM Code: 21024416

## „T“ HANDLE WITHOUT LOCK

BVM 551, BVM 581, BVM 587, IMOLA,  
INDIANAPOLIS, MONZA, SILVERSTONE

## RIELDA LOCK MOD. 538 WITHOUT LEVER

ARIA+, ARIA L, ARIA M, VISTA+



ATEL Code: 21015036  
OEM Code: 21015036



ATEL Code: 12016116  
OEM Code: 12016116

## PIN FOR DRAWER WHEEL

ARIA L, ARIA L, ARIA M, ARIA S, ARIA+,  
BVM 636, BVM 671, BVM 672, BVM  
676, BVM 681, BVM 685, BVM 695,  
SILVERSTONE, VEGA, VISTA, VISTA+



ATEL Code: 19055521  
OEM Code: 19055521

## LOCK ROD SCREW

ARIA+, ARIA M, BVM 681, BVM 685, VEGA



ATEL Code: 32090636  
OEM Code: 32090636

## HEXAGON HEAD SCREW M5x18

BVM 636, BVM 676, BVM 681, BVM 685,  
VEGA

## „T“ HANDLE WITHOUT LOCK

BVM 636



ATEL Code: 35160616  
OEM Code: 35160616

## SELF-LOCKING WASHER ø 8,3 mm

BVM 676, BVM 681, BVM 685, VEGA



ATEL Code: 30100926  
OEM Code: 30100926

## METAL KEYBOARD

105x80 mm

ARIA L, ARIA M, BVM 671, BVM 681, BVM  
685, BVM 695, VISTA+, VISTA

# WITHDRAWAL COMPARTMENT WITHDRAWAL COMPARTMENT AND COMPONENTS



ATEL Code: 05115635  
OEM Code: 05115635

## PUSH-DOOR

ARIA+, ARIA L, ARIA M, ARIA S, BVM 636, BVM 676, BVM 681, BVM 685, BVM 695, VEGA



ATEL Code: 0177901002P77  
OEM Code: 01779010-02P77

## PUSH-DOOR

BVM 681, BVM 685, VEGA 850



ATEL Code: 0175193202P77  
OEM Code: 01751932-02P77

## WITHDRAWAL COMPARTMENT ASSEMBLY

ARIA S, BVM 636



ATEL Code: 0624281201  
OEM Code: 06242812-01

## WITHDRAWAL COMPARTMENT ASSEMBLY

ARIA L



ATEL Code: 0514031501M09  
OEM Code: 05140315-01M09

## WITHDRAWAL COMPARTMENT RIGHT SLIDE

ARIA L, ARIA M, ARIA S, BVM 636, BVM 671, BVM 676, BVM 681, BVM 685, VEGA



ATEL Code: 0514041501M09  
OEM Code: 05140415-01M09

## WITHDRAWAL COMPARTMENT RIGHT SLIDE

ARIA L, ARIA M, ARIA S, BVM 636, BVM 671, BVM 676, BVM 681, BVM 685, VEGA



ATEL Code: 01554611  
OEM Code: 01554611

## DOOR LEVER

ARIA L, ARIA M, ARIA S, BVM 636, VEGA



ATEL Code: 01554711  
OEM Code: 01554711

## DOOR LEVER

10x70 mm

ARIA S, BVM 636, VEGA



ATEL Code: 06344710  
OEM Code: 06344710

## ARIA MASTER RIGHT SENSOR ASSEMBLY

ARIA L, ARIA M



ATEL Code: 08011511  
OEM Code: 08011511

## WITHDRAWAL COMPARTMENT INSULATION

ARIA L, BVM 676, BVM 681, BVM 685, VEGA

# COIN INTRODUCTION AND RECOVERY

## COIN INTRODUCTION

## COIN RECOVERY



ATEL Code: 0509421201  
OEM Code: 05094212-01

---

### COIN SLIDE ASSEMBLY

---

VEGA



ATEL Code: 05233515M37  
OEM Code: 05233515M37

---

### COIN INTRODUCTION SLIDE

---

BVM 671, BVM 681



ATEL Code: 23036716  
OEM Code: 23036716

---

### LAMP 24V 1,2W

---

BVM 551, BVM 581, BVM 587, IMOLA,  
INDIANAPOLIS, MONZA, SILVERSTONE



ATEL Code: 0523361501M09  
OEM Code: 0523361501M09

---

### BLACK COIN RECOVERY SLIDE

---

ARIA L, ARIA M, BVM 671, BVM 681, BVM  
685, BVM 695



ATEL Code: 9606552001  
OEM Code: 96065520-01

---

### COIN RETURN MOTOR ASSEMBLY

---

BVM 671, BVM 681, BVM 685, BVM 695



# CABINET

## BODY COMPONENTS - COIN BOXES

### ELECTRIC AND ELECTRONIC COMPONENTS - MICROSWITCHES



ATEL Code: 21057212  
OEM Code: 21057212

#### FOOT ASSEMBLY 10x40 mm ø 47 mm

ARIA+, ARIA L, ARIA M, BVM 671, BVM 676, BVM 681, BVM 685, BVM 695, VEGA, VISTA, VISTA+



ATEL Code: 21020922B  
OEM Code: 21020922B

#### FOOT ASSEMBLY ø 10 mm

ARIA S



ATEL Code: 01644311L09  
OEM Code: 01644311L09

#### SKIRTING BOARD BLACK

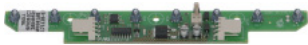
BVM 681, BVM 685, VEGA 850



ATEL Code: 9605632001  
OEM Code: 96056320-01

#### COIN BOX ASSEMBLY

BVM 671, BVM 681, BVM 685



ATEL Code: 26049526  
OEM Code: 26049526

#### SENSOR ELECTRONIC BOARD 151x20 mm

ARIA L, ARIA M, ARIA S, ARIA+, BVM 671, BVM 676, BVM 681, BVM 685, BVM 695, VEGA, VISTA



ATEL Code: 26049626  
OEM Code: 26049626

#### SENSOR ELECTRONIC BOARD 150x20 mm

ARIA L, ARIA M, ARIA S, ARIA+, BVM 671, BVM 676, BVM 681, BVM 685, BVM 695, VEGA, VISTA



ATEL Code: 26016726  
OEM Code: 26016726

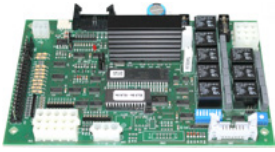
#### SAFETY SWITCH 16A 250V

ARIA L, ARIA M, ARIA S, BVM 581, BVM 587, BVM 636, BVM 671, BVM 676, BVM 681, BVM 685, BVM 695, SILVERSTONE, VEGA, VISTA, VISTA+

# ELECTRIC PANEL

## ELECTRIC AND ELECTRONIC COMPONENTS

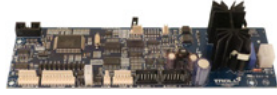
### THERMOFUSES - TOOLS



ATEL Code: 26040216  
OEM Code: 26040216

#### EXECUTIVE MDB ELECTRONIC BOARD

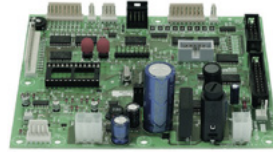
IMOLA, MONZA



ATEL Code: 26027526  
OEM Code: 26027526

#### SMT TROLL ELECTRONIC BOARD

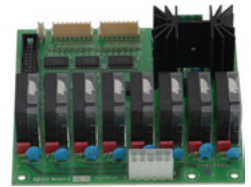
ARIA L, ARIA M, ARIA S, BVM 636, BVM 671, BVM 676, BVM 681, BVM 685, BVM 695



ATEL Code: 2604921601  
OEM Code: 26049216-01

#### MASTER ELECTRONIC BOARD 125x144 mm

BVM 551, BVM 581, BVM 587



ATEL Code: 26049116  
OEM Code: 26049116

#### POWER ELECTRONIC BOARD 120x115 mm

BVM 551, BVM 581, BVM 587



ATEL Code: 2602751601  
OEM Code: 26027516-01

#### POWER ELECTRONIC BOARD 212x63 mm

BVM 636, BVM 671, BVM 676, BVM 681, BVM 685, VEGA



ATEL Code: 2604833601  
OEM Code: 26048336-01

#### SWITCH POWER SUPPLY 65W 230/110V

ARIA L, ARIA M



ATEL Code: 22172312  
OEM Code: 22172312

#### WIRING + EXECUTIVE POWER SUPPLY

ARIA L, ARIA M, BVM 671, BVM 681, BVM 685, BVM 695, VISTA+



ATEL Code: 22125092  
OEM Code: 22125092

#### CABLE 6A 3900 mm AC0120

BVM 636



ATEL Code: 22125072  
OEM Code: 22125072

#### CABLE 6A MOLEX 1120 mm

BVM 671, BVM 676, BVM 681, BVM 685, VEGA



ATEL Code: 22125052  
OEM Code: 22125052

#### MASTER/SLAVE CABLE 3000mm

BVM 671, BVM 676, BVM 681, BVM 685, BVM 695, VEGA



ATEL Code: 22146922  
OEM Code: 22146922

#### 26 PINS FLAT CABLE 3080 mm

BVM 551, BVM 581, BVM 587



ATEL Code: 26012116  
OEM Code: 26012116

#### NET FILTER

BVM 551, BVM 581, BVM 587, BVM 636, BVM 671, BVM 676, BVM 681, BVM 685, VEGA



ATEL Code: 33065526  
OEM Code: 33065526

#### ELECTRONIC BOARD SPACER 10 mm

ARIA L, ARIA M, ARIA S, BVM 685, BVM 695, VISTA



ATEL Code: 23017316  
OEM Code: 23017316

#### SNAP-TYPE FUSE HOLDER 6,3x32 mm

ARIA+, ARIA L, ARIA M, ARIA S, BVM 551, BVM 581, BVM 587, BVM 636, BVM 676, BVM 681, BVM 685, BVM 695, VEGA, VISTA, VISTA+



ATEL Code: 0509721502M09  
OEM Code: 05097215-02M09

#### SERVICE KEY XT CLIXON AM

BVM 636, BVM 671, BVM 676, BVM 681, BVM 685, BVM 695, VEGA

# PRODUCT DRAWER AND SPIRALS ELECTRIC AND ELECTRONIC COMPONENTS GEAR MOTORS



ATEL Code: 22105612  
OEM Code: 22105612

## DRAWER WIRING

ARIA +, ARIA L, ARIA M, ARIA S, BVM 636, BVM 676, BVM 681, BVM 685, VEGA, VISTA, VISTA+



ATEL Code: 20017910  
OEM Code: 20017910

## DOUBLE-SPIRAL GEARMOTOR ASSEMBLY 24V 4W

ARIA +, ARIA L, ARIA M, ARIA S, BVM 636, BVM 676, BVM 681, BVM 685, VEGA, VISTA, VISTA+



ATEL Code: 20017510N  
OEM Code: 20017510

## SINGLE SPIRAL GEARMOTOR ASSEMBLY 24V

ARIA +, ARIA L, ARIA M, ARIA S, BVM 636, BVM 676, BVM 681, BVM 685, BVM 695, VEGA, VISTA, VISTA+



ATEL Code: 43048610  
OEM Code: 43048610

## GEARMOTOR FERRULE + SHAFT ASSEMBLY ø 57/63 mm

ARIA L, ARIA M, ARIA S, BVM 636, BVM 671, BVM67, BVM 681, BVM 685, VEGA



ATEL Code: 35157616  
OEM Code: 35157616

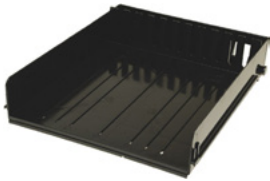
## FLAT WASHER ø 4,3x12 mm

BVM 676, BVM 681, BVM 685, BVM 695, VEGA, VISTA

# PRODUCT DRAWER AND SPIRALS

## PRODUCT DRAWERS AND COMPONENTS

### SCREWS



ATEL Code: 0512434502  
OEM Code: 05124345-02

#### PLASTIC DRAWER 6 COMPARTMENTS

ARIA M, BVM 671, VEGA

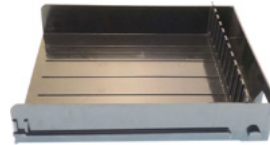


ATEL Code: 0512432502N  
OEM Code: 05124325-02

#### PLASTIC DRAWER 8 COMPARTMENTS

600x550 mm

BVM 685, BVM 636, BVM 676, BVM 681, BVM 685, VEGA 850



ATEL Code: 0512434503M09  
OEM Code: 05124345-03M09

#### PLASTIC DRAWER 6 COMPARTMENTS

ARIA M, BVM 671, VEGA



ATEL Code: 34115416  
OEM Code: 34115416

#### HEXAGONAL NUT $\varnothing$ 5 mm WITH WASHER

ARIA L, ARIA M, BVM 676, BVM 681, BVM 685, VISTA+



ATEL Code: 05127715  
OEM Code: 05127715

#### BOTTLES SUPPORT FRONT ELEMENT

ARIA L, ARIA M, BVM 636, BVM 676, BVM 681, BVM 685, BVM 695, SILVERSTONE, VEGA, VISTA, VISTA+



ATEL Code: 05127815  
OEM Code: 05127815

#### BOTTLES SUPPORT REAR ELEMENT

ARIA +, ARIA L, ARIA M, ARIA S, BVM 636, BVM 671, BVM 676, BVM 681, BVM 685, BVM 695, SILVERSTONE, VEGA, VISTA, VISTA+



ATEL Code: 05360315M09  
OEM Code: 05360315M09

#### CANS/BOTTLES SUPPORT LINK

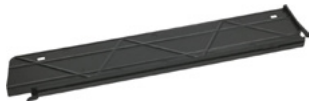
ARIA +, ARIA L, ARIA M, ARIA S, BVM 636, BVM 676, BVM 681, BVM 685, VEGA, VISTA, VISTA+



ATEL Code: 05116416  
OEM Code: 05116416

#### DRAWER WHEEL $\varnothing$ 27.5 mm

ARIA +, ARIA L, ARIA M, ARIA S, BVM 636, BVM 671, BVM 676, BVM 681, BVM 685, BVM 695, SILVERSTONE, VEGA, VISTA, VISTA+

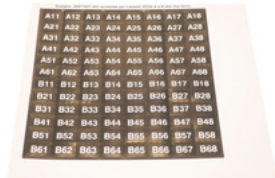


ATEL Code: 0512422502  
OEM Code: 05124225-02

#### DRAWER DIVIDER

500x97 mm

ARIA +, ARIA L, ARIA M, ARIA S, BVM 636, BVM 676, BVM 681, BVM 685, BVM 695, SILVERSTONE, VEGA, VISTA, VISTA+



ATEL Code: 30071621  
OEM Code: 30071621

#### DRAWER NUMBERING LABELS

ARIA L, ARIA M, ARIA S, BVM 636, BVM 676, BVM 681, BVM 685, VEGA, VISTA, VISTA+



ATEL Code: 30071611  
OEM Code: 30071611

#### DRAWER NUMBERING LABELS

BVM 636, BVM 676, SILVERSTONE, VEGA



ATEL Code: 30093311  
OEM Code: 30093311

#### PRICE LABELS (EURO)

ARIA L, ARIA M, ARIA S, BVM 636, BVM 676, BVM 681, BVM 685, BVM 695, VEGA, VISTA, VISTA+



ATEL Code: 21014211  
OEM Code: 21014211

#### ALUMINIUM LABEL HOLDER 597 mm

BVM 676, BVM 681, BVM 685, VEGA



ATEL Code: 21012811L24  
OEM Code: 21012811L24

#### BOTTLES VERTICAL SUPPORT

33x6,6x439 mm

ARIA +, ARIA L, ARIA M, ARIA S, BVM 636, BVM 671, BVM 676, BVM 681, BVM 685, BVM 695, VEGA, VISTA, VISTA+



ATEL Code: 01578840  
OEM Code: 01578840

#### BOTTLE HOLDER ASSEMBLY

ARIA +, ARIA L, ARIA M, ARIA S, BVM 636, BVM 676, BVM 681, BVM 685, VEGA, VISTA, VISTA+



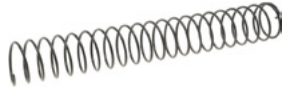
ATEL Code: 32222826  
OEM Code: 32222826

#### STAINLESS STEEL SELF-TAPPING SCREW 2,9x9,5 mm

ARIA +, ARIA L, ARIA M, ARIA S, BVM 636, BVM 676, BVM 681, BVM 685, BVM 695, VEGA, VISTA, VISTA+

# PRODUCT DRAWER AND SPIRALS

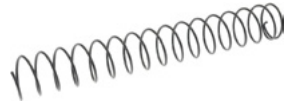
## SPIRALS



ATEL Code: 07018811L16  
OEM Code: 07018811L16

### RIGHT SPIRAL $\varnothing$ 68 mm PITCH 22

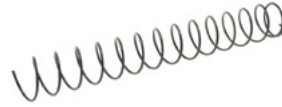
ARIA +, ARIA L, ARIA M, ARIA S, BVM 636, BVM 671, BVM 676, BVM 681, BVM 685, BVM 695, SILVERSTONE, VEGA, VISTA, VISTA+



ATEL Code: 07018511L16  
OEM Code: 07018511L16

### RIGHT SPIRAL $\varnothing$ 68 mm PITCH 30

ARIA +, ARIA L, ARIA M, ARIA S, BVM 636, BVM 671, BVM 676, BVM 681, BVM 685, BVM 695, SILVERSTONE, VEGA, VISTA, VISTA+



ATEL Code: 0702161101L16  
OEM Code: 070216111-01L16

### LEFT SPIRAL $\varnothing$ 68 mm PITCH 35

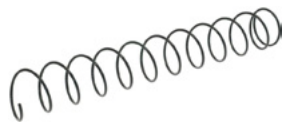
ARIA +, ARIA L, ARIA M, ARIA S, BVM 636, BVM 671, BVM 676, BVM 681, BVM 685, BVM 695, SILVERSTONE, VEGA, VISTA, VISTA+



ATEL Code: 0701811101L16  
OEM Code: 070181111-01L16

### RIGHT SPIRAL $\varnothing$ 68 mm PITCH 35

ARIA +, ARIA L, ARIA M, ARIA S, BVM 636, BVM 671, BVM 676, BVM 681, BVM 685, BVM 695, SILVERSTONE, VEGA, VISTA, VISTA+



ATEL Code: 0701831101L16  
OEM Code: 070183111-01L16

### RIGHT SPIRAL $\varnothing$ 68 mm PITCH 45

ARIA +, ARIA L, ARIA M, ARIA S, BVM 636, BVM 671, BVM 676, BVM 681, BVM 685, BVM 695, SILVERSTONE, VEGA, VISTA, VISTA+



ATEL Code: 0701981101L16  
OEM Code: 070198111-01L16

### LEFT SPIRAL $\varnothing$ 68 mm PITCH 45

ARIA +, ARIA L, ARIA M, ARIA S, BVM 636, BVM 671, BVM 676, BVM 681, BVM 685, BVM 695, SILVERSTONE, VEGA, VISTA, VISTA+



ATEL Code: 07018911L16  
OEM Code: 07018911L16

### RIGHT SPIRAL $\varnothing$ 68 mm PITCH 60

ARIA +, ARIA L, ARIA M, ARIA S, BVM 636, BVM 671, BVM 676, BVM 681, BVM 685, BVM 695, SILVERSTONE, VEGA, VISTA, VISTA+



ATEL Code: 07019611L16  
OEM Code: 07019611L16

### LEFT SPIRAL $\varnothing$ 68 mm PITCH 60

ARIA +, ARIA L, ARIA M, ARIA S, BVM 636, BVM 671, BVM 676, BVM 681, BVM 685, BVM 695, SILVERSTONE, VEGA, VISTA, VISTA+



ATEL Code: 07019311L16  
OEM Code: 07019311L16

### RIGHT SPIRAL $\varnothing$ 68 mm PITCH 77

ARIA +, ARIA L, ARIA M, ARIA S, BVM 636, BVM 671, BVM 676, BVM 681, BVM 685, BVM 695, SILVERSTONE, VEGA, VISTA, VISTA+



ATEL Code: 07019511L16  
OEM Code: 07019511L16

### LEFT SPIRAL $\varnothing$ 68 mm PITCH 77

ARIA +, ARIA L, ARIA M, ARIA S, BVM 636, BVM 671, BVM 676, BVM 681, BVM 685, BVM 695, SILVERSTONE, VEGA, VISTA, VISTA+



ATEL Code: 07021111L16  
OEM Code: 07021111L16

### RIGHT SPIRAL $\varnothing$ 68 mm PITCH 94

ARIA +, ARIA L, ARIA M, ARIA S, BVM 636, BVM 671, BVM 676, BVM 681, BVM 685, BVM 695, SILVERSTONE, VEGA, VISTA, VISTA+



ATEL Code: 07021211L16  
OEM Code: 07021211L16

### LEFT SPIRAL $\varnothing$ 68 mm PITCH 94

ARIA +, ARIA L, ARIA M, ARIA S, BVM 636, BVM 671, BVM 676, BVM 681, BVM 685, BVM 695, SILVERSTONE, VEGA, VISTA, VISTA+



ATEL Code: 05116516  
OEM Code: 05116516

### SPIRAL EJECTOR

ARIA +, ARIA L, ARIA M, ARIA S, BVM 636, BVM 671, BVM 676, BVM 681, BVM 685, BVM 695, SILVERSTONE, VEGA, VISTA, VISTA+

# COOLING UNIT COMPRESSORS COOLING UNITS



ATEL Code: 30FR040  
OEM Code: 14010216



ATEL Code: 30FR041



ATEL Code: 30FR042



ATEL Code: 30FR043

## COMPRESSOR ACC GP12TB

3/8" 220/240V 50HZ power  
1/3HP displacement 12.00CC  
gas R134A HMBP

BVM 581, BVM 587, BVM 676, BVM  
681, BVM 685, INDIANAPOLIS, MONZA,  
SILVERSTONE, VEGA

## COMPRESSOR ACC GP14TB

220/240V 50HZ power 3/8  
displacement 14,00CC gas  
R134A HMBP

## COMPRESSOR ACC GL90TB

220/240V 50HZ power 1/4HP  
displacement 8,85CC gas R134A  
HMBP

## COMPRESSOR R134 GL80TB

220-240V 50Hz HMBP



ATEL Code: 30FR065



ATEL Code: 30FR060



ATEL Code: 30FR017



ATEL Code: 9001731003  
OEM Code: 90017310-03

## COMPRESSOR CUBIGEL GP16TB

220/240V 50Hz - power 3/8 Hp  
displacement 16.00 cc - gas  
R134a HMBP

## COMPRESSOR EMBRACO NEK6214Z

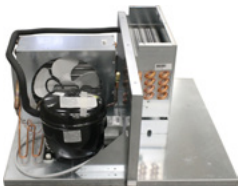
220/240V 50Hz - power 1/2 Hp,  
displacement 16.80 cc - gas  
R134a HMBP

## COMPRESSOR EMBRACO NEK6187Z

220/240V 50Hz - power 1/3 Hp  
displacement 10.00 cc - gas  
R134a HMBP

## COOLING UNIT 230V 50Hz

ARIA L, ARIA M



ATEL Code: 90005210  
OEM Code: 90005210



ATEL Code: 9000641001  
OEM Code: 90006410-01



ATEL Code: 90003010  
OEM Code: 90003010



ATEL Code: 90028810  
OEM Code: 90028810

## COOLING UNIT

BVM 676, VEGA 700

## COOLING UNIT 230V 50Hz

VEGA 680

## COOLING UNIT

BVM 681, BVM 685, VEGA 700, VEGA 850

## COOLING UNIT 230V 50Hz

ARIA S

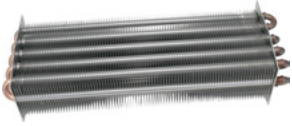


ATEL Code: 9002862001  
OEM Code: 90028620-01

## COOLING UNIT

VISTA+

# COOLING UNIT EVAPORATORS - FANS PROBES - SCREWS



ATEL Code: 43014116  
OEM Code: 43014116

## EVAPORATOR

BVM 636, VEGA 680



ATEL Code: 90011311  
OEM Code: 90011311

## EVAPORATOR

BVM 581, BVM 587, MONZA,  
SILVERSTONE

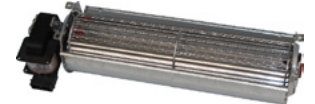


ATEL Code: 20015916  
OEM Code: 20015916

## TANGENTIAL FAN 230V 50/60Hz

240 mm - ø 60 mm

VEGA 600



ATEL Code: 20021016  
OEM Code: 20021016

## TANGENTIAL FAN 230V 50/60Hz

270 mm - ø 60 mm

ARIA L, ARIA M, BVM 636, BVM 676, VEGA  
680, VEGA 700



ATEL Code: 2003841001  
OEM Code: 20038410-01

## TANGENTIAL FAN

ARIA+, ARIA L, VISTA



ATEL Code: 20019816  
OEM Code: 20019816

## FAN MOTOR 230V 50/60Hz 5W 1300 Rpm

BVM 636, BVM 671, BVM 676, BVM 681,  
BVM 685, VEGA



ATEL Code: 43034616  
OEM Code: 43034616

## FAN MOTOR + WIRING 230V 50/60Hz 18W 1300 Rpm

BVM 676, BVM 685, BVM 695



ATEL Code: 26023316  
OEM Code: 26023316

## TEMPERATURE PROBE

bulb ø 5 x 30 mm  
length 140 mm

BVM 551, BVM 581, BVM 587, BVM 636,  
BVM 671, BVM 676, BVM 681, BVM 685,  
BVM 695, VEGA



ATEL Code: 32050516  
OEM Code: 32050516

## HEXAGON HEAD SCREW 4Mx10 mm

ARIA L



ATEL Code: 12016116  
OEM Code: 12016116

## PIN FOR DRAWER WHEEL

wheel seat ø 9 mm - M5 pin

ARIA L, ARIA L, ARIA M, ARIA S, ARIA+,  
BVM 636, BVM 671, BVM 672, BVM  
676, BVM 681, BVM 685, BVM 695,  
SILVERSTONE, VEGA, VISTA, VISTA+

# COOLING UNIT VARIOUS



ATEL Code: 43126616  
OEM Code: 43126616

## DRIP TRAY 280x130x40 mm

BVM 551, BVM 581, BVM 587, BVM 676,  
BVM 685, IMOLA, MONZA, SILVERSTONE



ATEL Code: 05119516  
OEM Code: 05119516

## DRIP TRAY 260x110x30 mm

ARIA L, ARIA M, ARIA S, BVM 671, BVM  
676, BVM 681, BVM 685, BVM 695, VEGA



ATEL Code: 0513031501M37  
OEM Code: 05130315-01M37

## DRIP TRAY

BVM 636, BVM 676, VEGA, VISTA



ATEL Code: 0517021102M09  
OEM Code: 05170211-02M09

## DRIP TRAY 258X110X30 MM

BVM 636, BVM 676, VEGA



ATEL Code: 43029816  
OEM Code: 43029816

## STARTER RELAY MTRP- 0029-59 EMBRACO

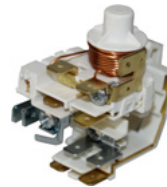
BVM 581, BVM 587, MONZA,  
SILVERSTONE



ATEL Code: 43034336  
OEM Code: 43034336

## COOLING UNIT RELAY T6213Z

BVM 676, BVM 685



ATEL Code: 41052116  
OEM Code: 41052116

## STARTER RELAY 9660B138

BVM 581, BVM 587, BVM 676, BVM 685,  
INDIANAPOLIS, MONZA, SILVERSTONE,  
VEGA







**GEV Großküchen-Ersatzteil-Vertrieb GmbH**

Gadastr. 4  
85232 Bergkirchen - Germany  
T +49 8142 6522-50  
info.ger@repagroup.com  
www.gev-online.com

**LF S.p.A. a socio unico**

Via Voltri 80  
47522 Cesena FC - Italy  
T +39 0547 341111  
info.it@repagroup.com  
www.lfspareparts724.com

**EPGC S.a.s.**

13 Rue des Forts  
59960 Neuville en Ferrain - France  
T +33 3 20250621  
france@repagroup.com  
www.epgc.com

**Commercial Catering Spares Ltd.**

Block C - Axis Point Hill Top Road  
Heywood - Lancashire - OL10 2RQ - UK  
T +44 1706 621 155  
info@ccspares.co.uk  
www.ccspares.co.uk

**Atel S.r.l. a socio unico**

Via Selvuzzis 51/2  
33100 Udine UD - Italy  
T +39 0432 602095  
info@atelitalia.com  
www.atelitalia.com